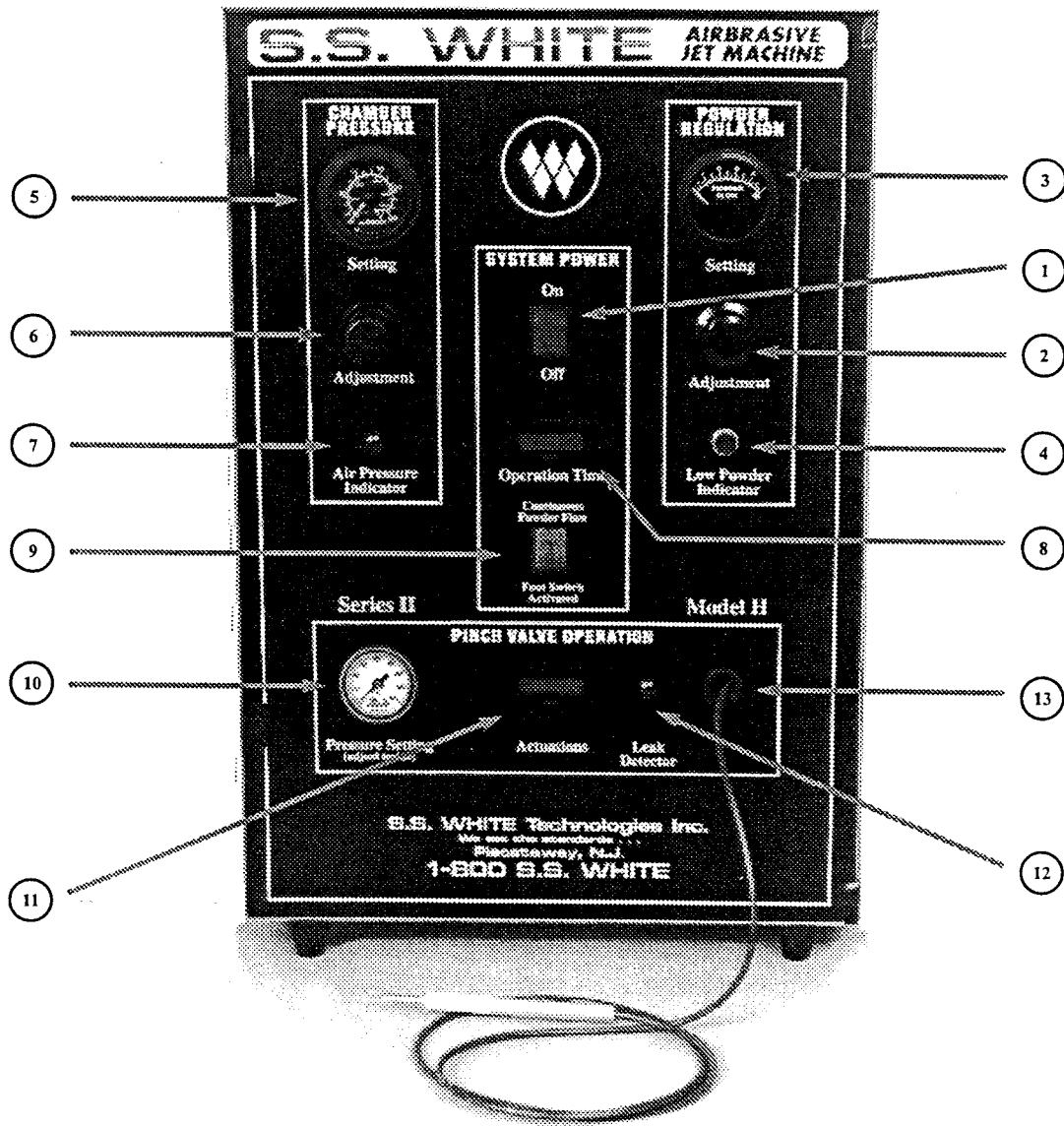
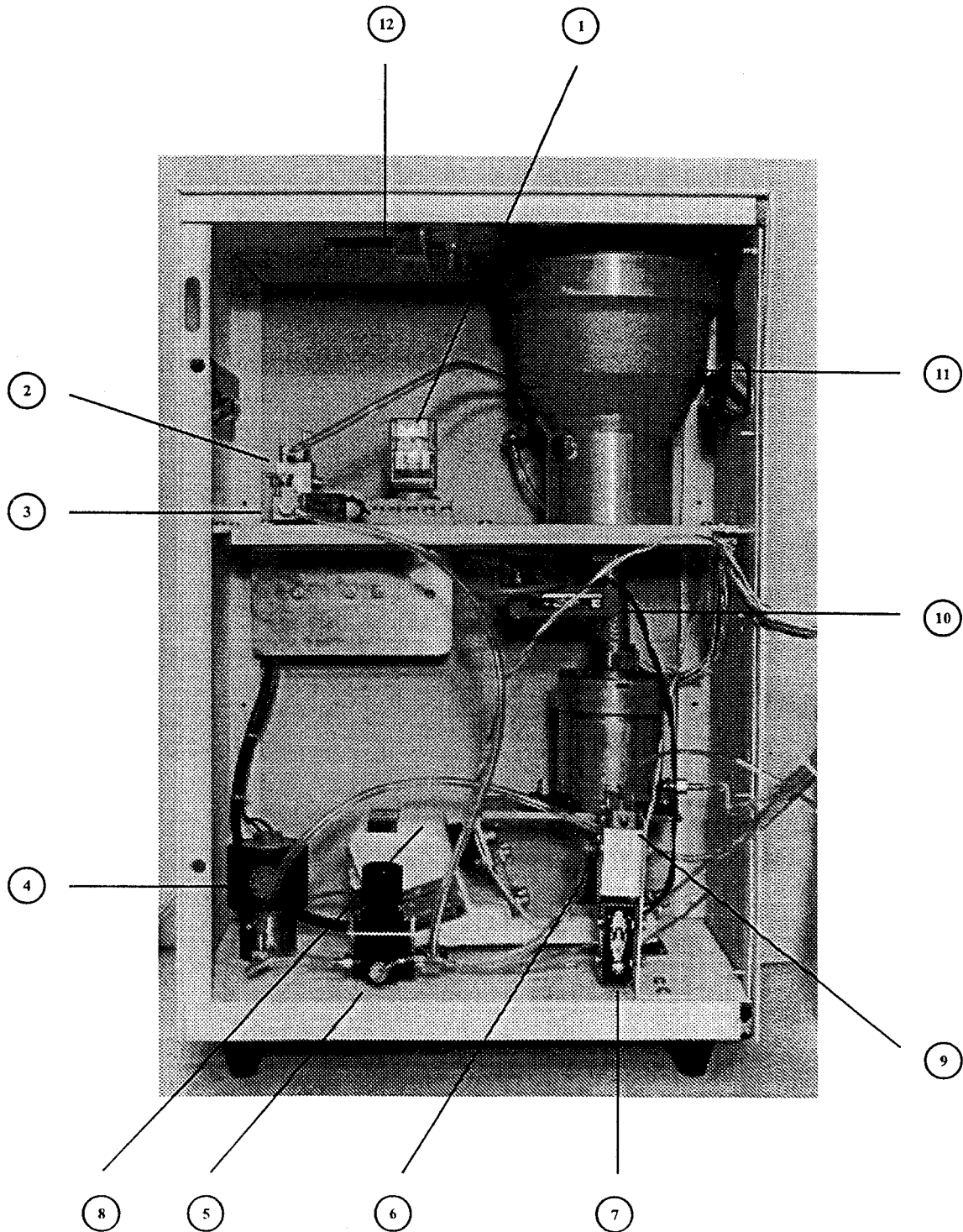


## Front Panel of the Model H



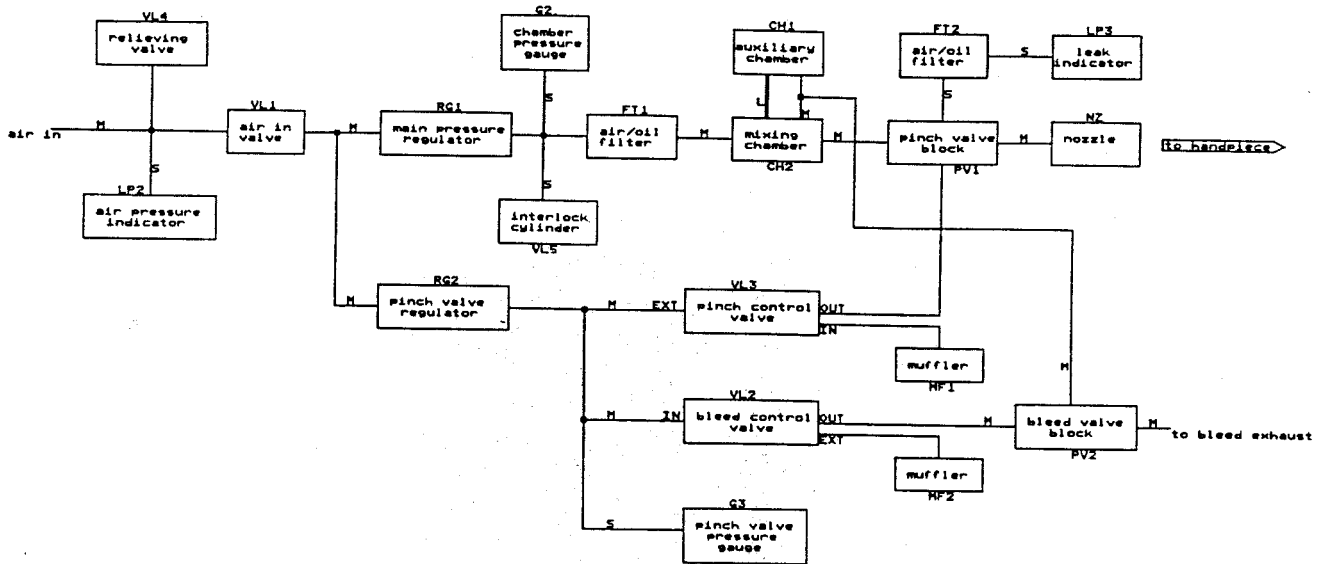
1. System Power ON/OFF Switch	- AE189	7. Air Pressure Indicator	- AR183
2. Powder Regulation Adjustment	- AE129X	8. Operation Time Indicator	- AE191
3. Powder Regulation Gauge	- AG112	9. Continuous/Foot Switch Toggle	- AE190
4. Low Powder Indicator	- AE110	10. Pinch Valve Pressure Gauge	- AG103U
5. Chamber Pressure Gauge	- AG111	11. Pinch Valve Actuations	- AE192
6. Chamber Pressure Adjustment	- AR140	12. Leak Detector	- AR182
13. Hand Piece Assembly	- AH101Y		

## Inside the Model H

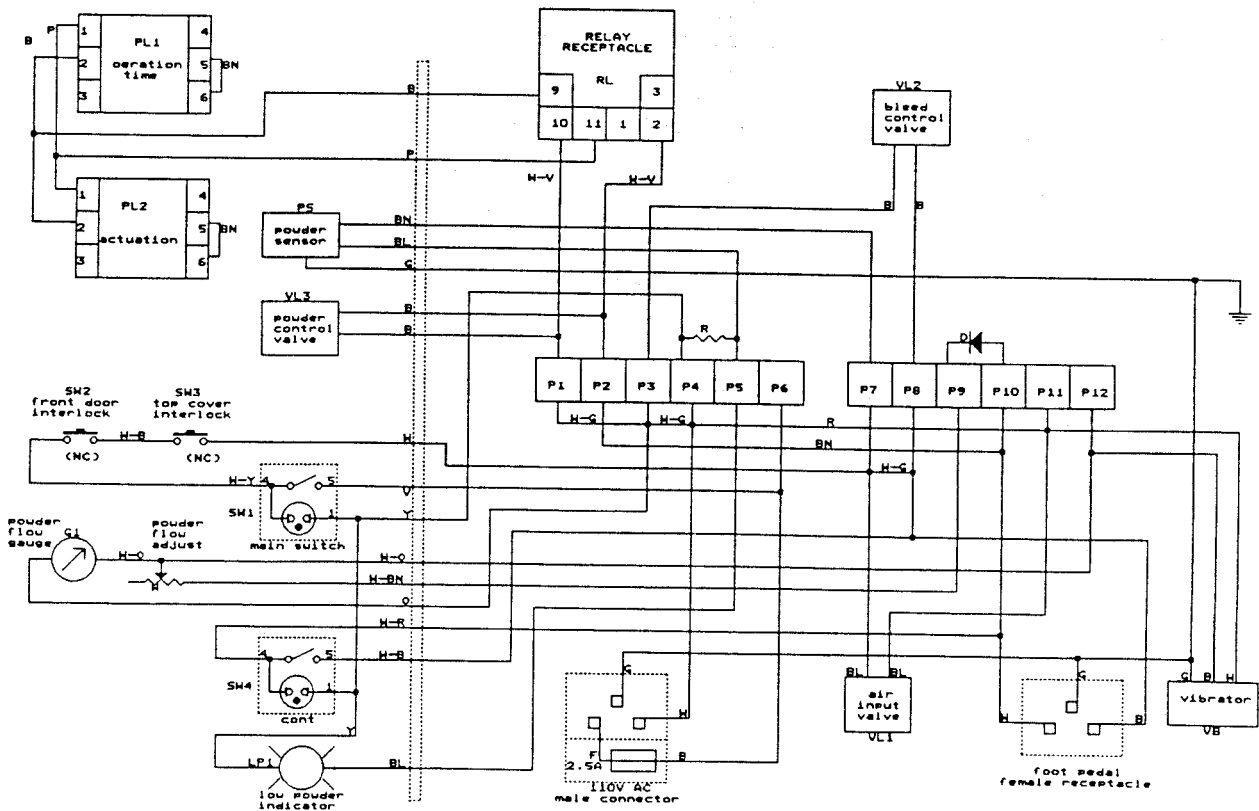


1. Relay -----	AE188	7. Electrical Interlock -----	AE200
2. Bleed Valve Assy. -----	AR142T2	8. Vibrator Assy. -----	AV104X2
3. Solenoid -----	AE193	9. Mixing Chamber Assy.--	AC118Z1
4. Main Air Solenoid Valve -----	AE133Y	10. Powder Level Sensor --	AE187
5. Pinch-Bleed Valve Assy. Regulator -	AR140V2	11. Auxiliary Chamber ----	AC107
6. Pinch Valve Assy. -----	AR142T1	12. Interlock Cylinder -----	AR133

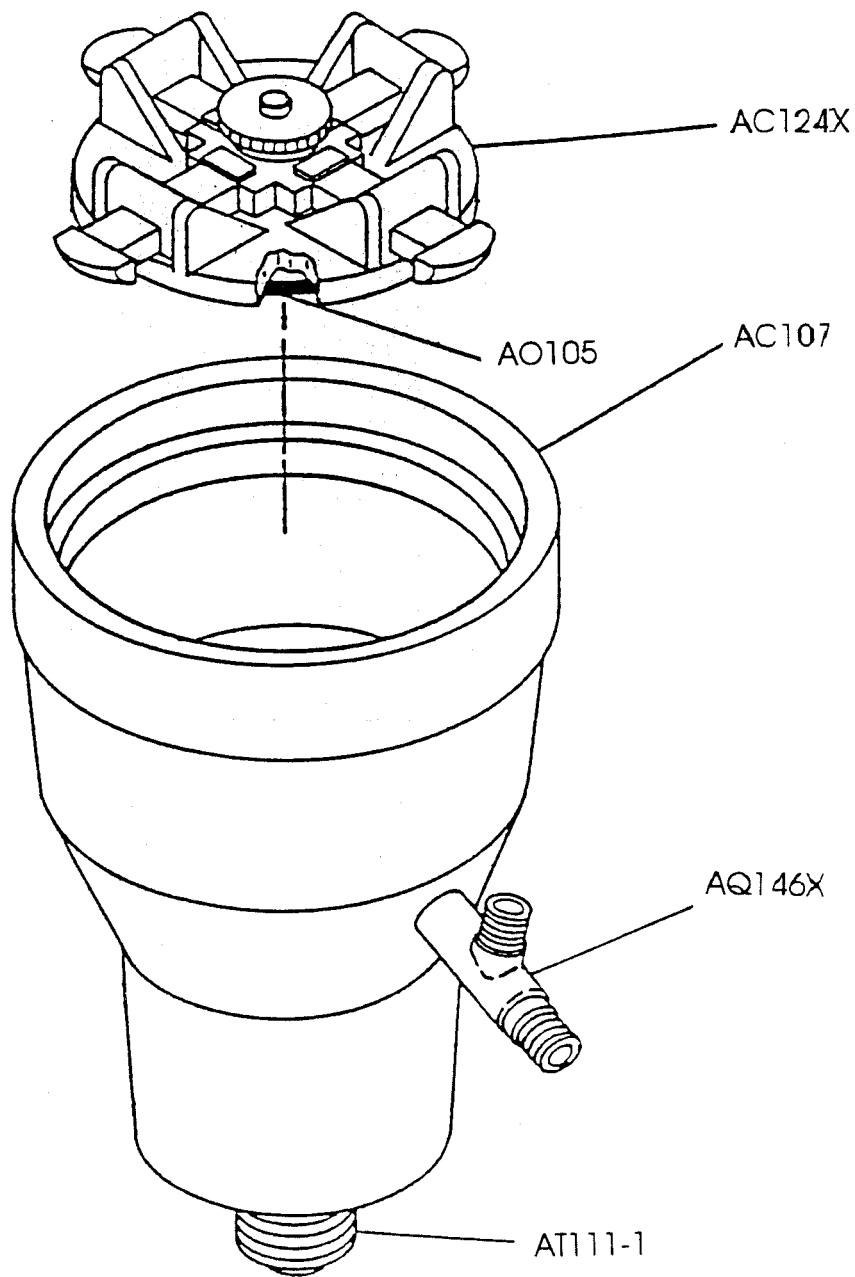
# Pneumatic Diagram



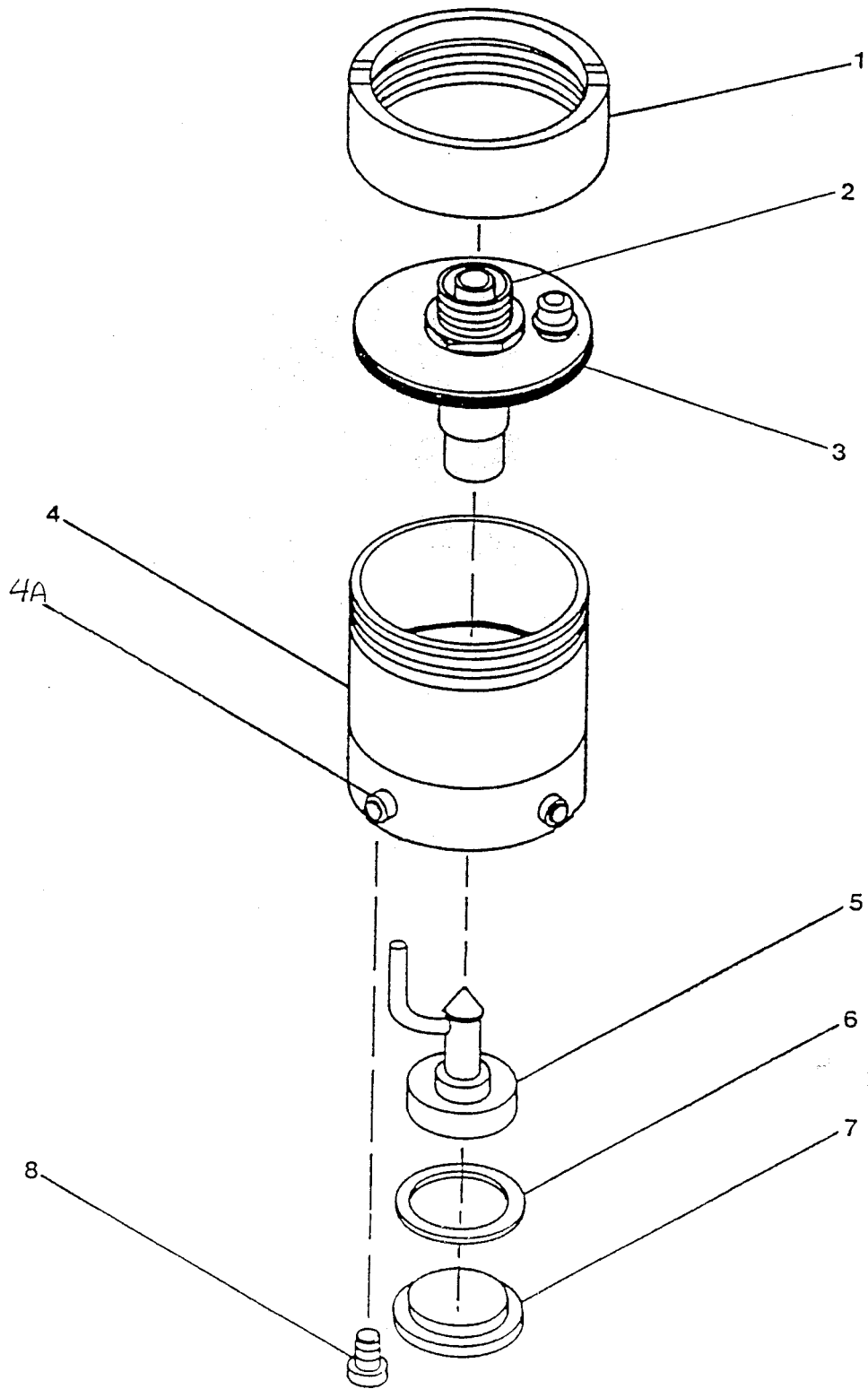
# Electrical Diagram



Auxiliary Chamber and  
Top Cover Assembly

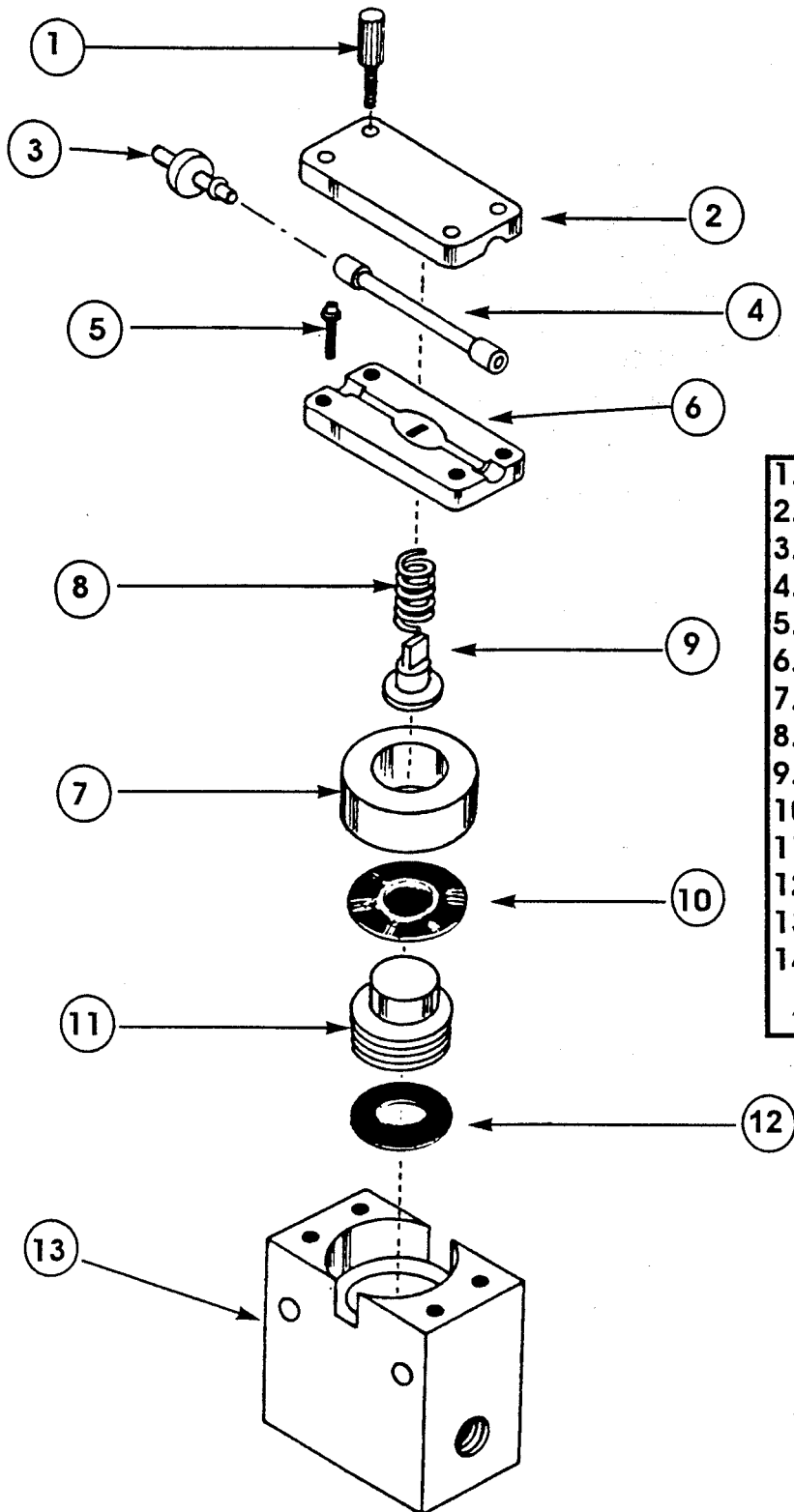


# Mixing Chamber Assembly



1. Nut Cap	-	AF402	4-A. Nipple Assy.	-	AQ135X
2. Cap Assy.	-	AC112X2	5. Orifice Plate Assy.	-	AC106X2
3. Gasket	-	AO111	6. Gasket	-	AO118
4. Mixing Chamber	-	AF118	7. Base Cap	-	AC114
		8. Screw	-		AF105A

# Pinch Valve Assembly AR142Z1



- |     |                                |                |
|-----|--------------------------------|----------------|
| 1.  | Screw, knurled (2) . . . . .   | AR113          |
| 2.  | Block, top . . . . .           | AR119          |
| 3.  | Hose fitting (2) . . . . .     | AQ130X         |
| 4.  | Pinch valve . . . . .          | AR142          |
| 5.  | Screw, special(2) . . . . .    | AF126          |
| 6.  | Block, bottom . . . . .        | AR112          |
| 7.  | Sleeve . . . . .               | AR117          |
| 8.  | Spring . . . . .               | AR126          |
| 9.  | Depresser . . . . .            | AR129          |
| 10. | Diaphragm . . . . .            | AR121          |
| 11. | Plunger . . . . .              | AR115          |
| 12. | O-ring . . . . .               | AO118          |
| 13. | Body . . . . .                 | AR171          |
| 14. | Fittings (Not Shown) . . . . . | AQ116<br>AQ119 |

# Handpiece Assembly

## AH101Y

